

Access Controller Quick Start Guide

Safety Requirements

Installation Requirements

- Comply with all local electrical safety codes and standards when operating the product.
- Check if the power supply is correct before operating the product.
 - Follow the electrical requirements to power the product. Requirements for selecting a power adapter:
 - The power supply must conform to the IEC 60950-1 and IEC 62368-1 standards.
 - The voltage must meet SELV (Safety Extra Low Voltage) requirements and not exceed ES-1 standards.
 - The power supply must meet LPS requirements and not exceed PS2.
 - We recommend using the power adapter provided with the product.
 - The power supply requirements (such as rated voltage) are subject to the product label.
- Do not connect the product to more than two power supplies unless otherwise specified.
- The product must be installed in a location only professionals can access to avoid the risk of non-professionals becoming injured from accessing the area while the product is in operation. Professionals must have full knowledge of the safeguards and risks when using the product.

Operation Requirements

- Do not open the cover when the product is powered on.
- Do not touch the heat dissipation component of the product.

Packing List

Check the items below to make sure every installation part is included and in proper condition.



1 x Web Controller



1 x Mounting Template



4 x Wall anchors



4 x Phillips Head Screw



1 x Allen Head Screw



8 x Zip Ties



1 x Allen Wrench



1 x Power Drill
(Not Included)



1 x Hammer
(Not Included)



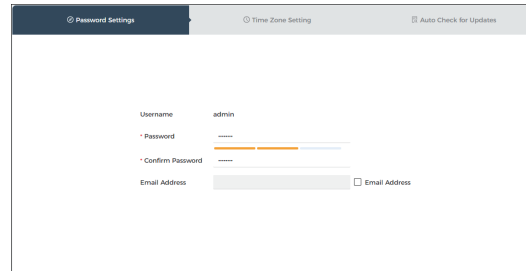
1 x Phillips Head Screwdriver
(Not Included)



1 x Rail Mount (Optional
Not Included)

Device Initialization

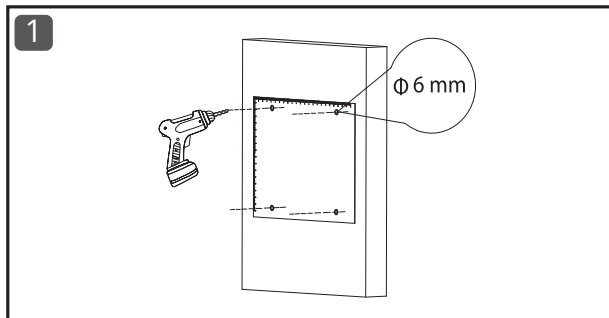
- 1 Enter the web controller's IP address in the browser address bar. Chrome and Firefox are recommended.
- 2 Follow the on-screen instructions to complete the initialization process.



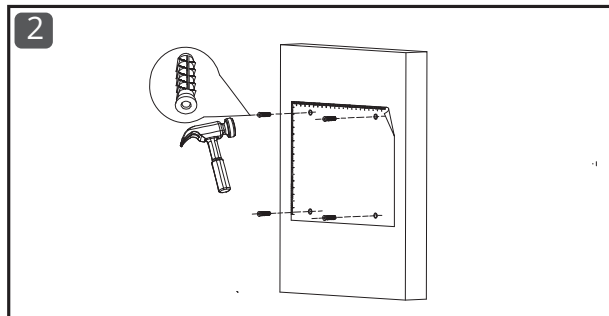
Installation Steps

Surface Mount Option A

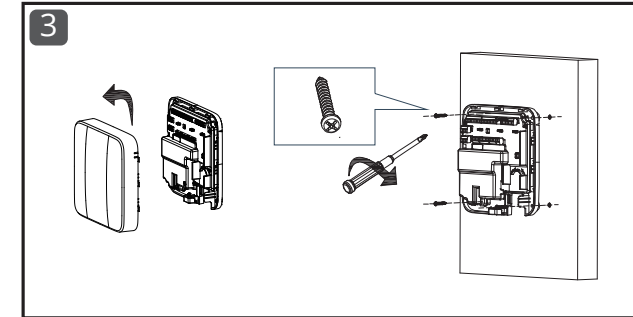
Place the mounting template in the desired spot on the wall. Make sure it is level. Then, drill 6mm holes at the marked screw hole locations using a drill.



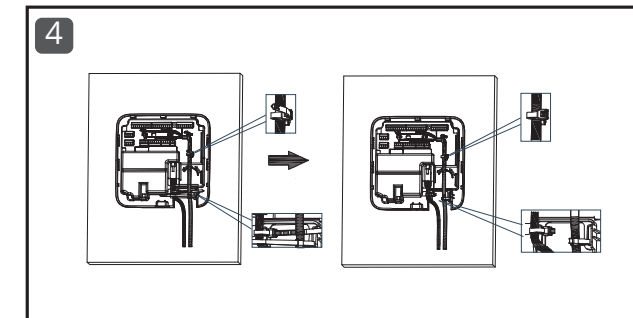
Firmly tap the wall anchors into the pre-drilled holes using a hammer, ensuring they are flush with the wall surface.



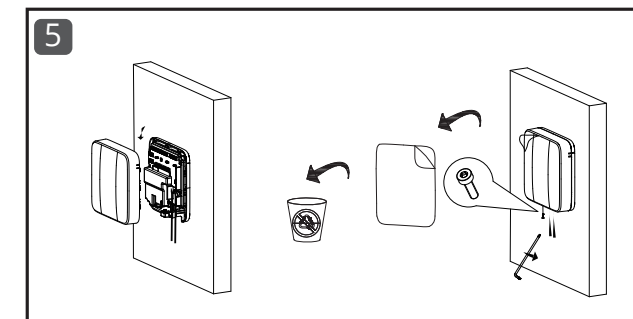
Insert a flathead screwdriver into the slots marked by the two small arrows on the side of the controller to open the cover. Align the base with the wall anchors, then secure the bracket using the supplied screws.



Connect the Ethernet cable and alarm wiring to their designated ports on the controller. Then, use the supplied zip ties to organize all cabling inside the enclosure.



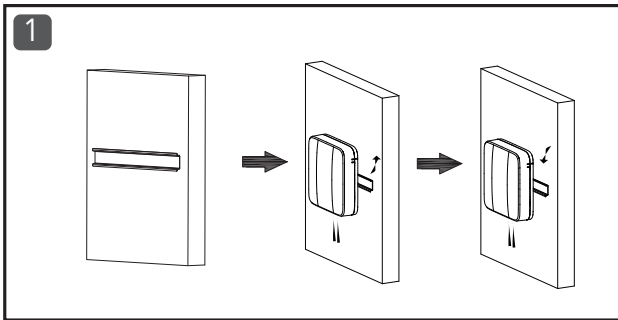
Attach the plastic lid to the web controller. Secure the casing by tightening the security screw. Peel off and discard the protective plastic film covering.



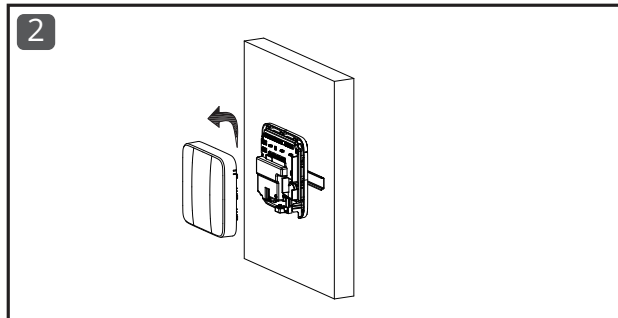
Web Controller Quick Start Guide

Rail Mount Option B

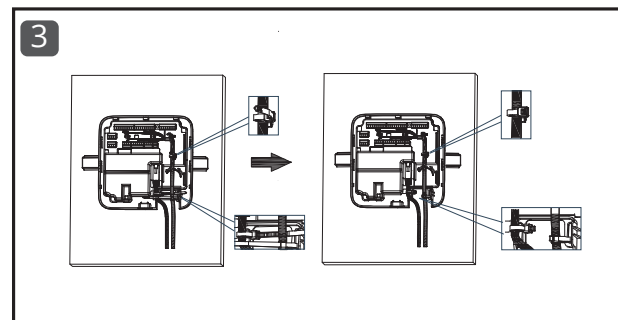
After installing the rail, lift the web controller and lower it onto the rail to position the controller.



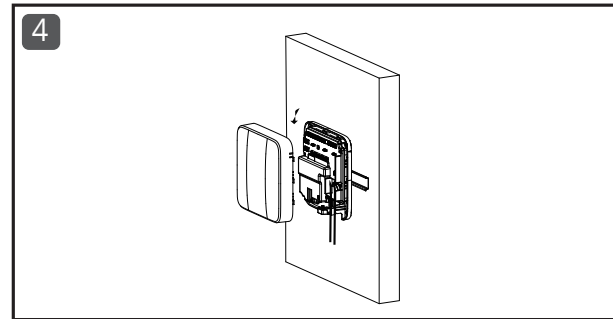
Insert a flathead screwdriver into the slots marked by the two small arrows on the side of the web access controller to open the cover.



Connect the Ethernet cable and alarm wiring to their designated ports on the controller. Then, use the supplied zip ties to organize all cabling inside the enclosure.



Attach the plastic lid to the web controller.



Secure the casing by tightening the security screw. Peel off and discard the protective plastic film covering.

